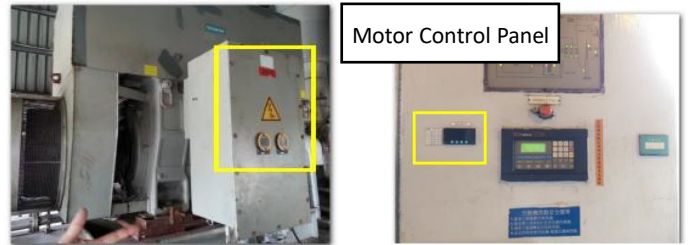


Cable Terminal Temperature Anomaly

Event : **Local Display Alarm:** 3.3kV Air compressor motor cable junction box - internal cable connector temperature is too high.

1. The temperature sensor is installed inside the 3.3kV air compressor motor cable junction box. The local display is installed on the motor control panel.

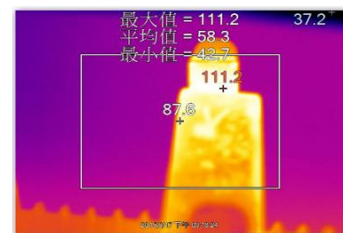


2. During the annual maintenance, the local display alerted that the upper-phase T-cable connector had reached a temperature of **115 degrees!**

3. Urgently stopped and inspected the high-temperature location! Using a thermal imager for further confirmation, the temperature of the connector was found to be 111.2 degrees.



4. Upon inspection, it was determined that the abnormality was **due to poor cable terminal crimping.**



5. After re-crimping the cable terminals and restoring power, the temperature returned to the normal range.

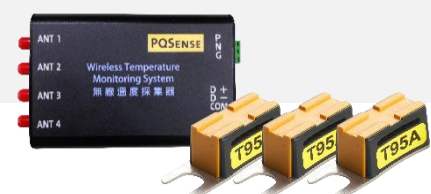


Conclusion :

This case involved temperature rise due to poor crimping of cable terminals, resulting in inadequate insulation. The cable terminals were located inside the air compressor motor cable junction box, making it difficult to observe the high-temperature phenomenon directly from the exterior. The wireless temperature monitoring equipment, coupled with the local display, enables immediate temperature monitoring, providing effective warnings.

Wireless Temperature Monitoring System

Battery-free wireless temperature sensors provide long-term, safe monitoring, eliminating battery-related risks in high-temperature



environments, and aiding power temperature monitoring and anomaly detection.